

Did you know that...

- Puhos is near the international border crossing point of Niirala, which is open 24/7.
- The Puhos Port has a depth of 4.2 metres and it provides a direct sea link to Europe and Russia.
- Communications links of 10 Gb are available at Puhos through two optical fibre cables and operators.
- There is a VIP sauna and accommodation facilities plus facilities for holding meetings at Puhos.
- Hexion Oy owns a 10 megawatt energy generation plant at Puhos, which runs with hydrogen, chips and heavy fuel oil.
- Central Karelia Development Company KETI Ltd provides comprehensive business advisory services and stakeholder cooperation for companies planning to start operations in the area.

For more information about the area, go to www.kiteenpuhos.fi

Download the cards www.pohjois-karjala.fi/bioteollisuusalueet



Puhos-Kitee

Bioindustrial areas in North Karelia - information card

Puhos-Kitee

Area overview

The Puhos industrial area is located in Kitee near the Niirala border crossing point between Finland and Russia. The location in the vicinity of the Baltic Sea deep water port, railway and highway 6 opens up excellent business opportunities around the world.

Companies engaged in the manufacturing of wood products and wood processing and their support services have operated in the Puhos industrial area for decades. The location of the site is optimal due to the availability of wood raw material and easy distribution of final products. After Kitee's sawmill ceased business in the area, it created room for new operators.

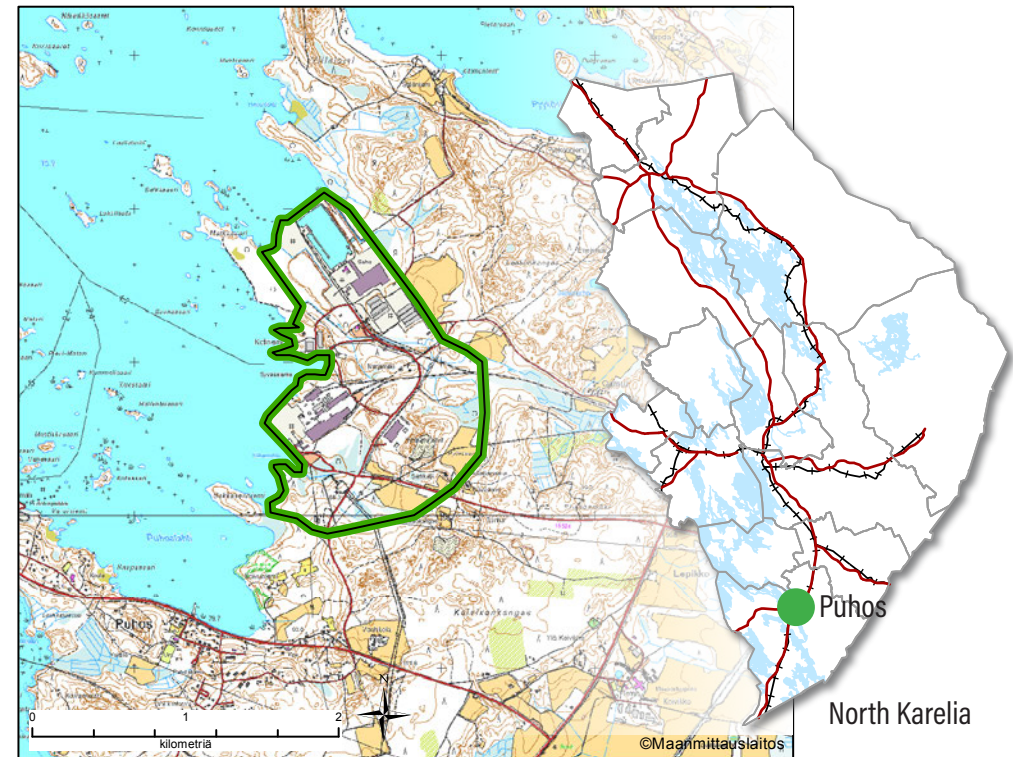
In addition to the sawmill, the Puhos area is home to other industries, planned industrial plots and an industrial hall owned by the City of Kitee which also has social, administrative and dining facilities. Production and office facilities in the industrial hall can be rented at affordable prices. The Puhos region provides operators with clear synergy benefits.

Prospects in the area

A total of about 20 hectares has been reserved for industrial purposes in the local detailed plan and there are vacant industrial premises with a gross floor area of about 30,000 square metres. The Puhoshalli hall offers safe and clean space for companies in food and natural products industries. Production facilities are being continuously built and developed to meet the needs of companies.

In addition to the finished facilities and excellent infrastructure and transport connections, companies located in the Puhos region can get the support and services they need through KETI Oy, a regional business development company. KETI helps companies relocate with the so-called one-stop shop service model.

Skilled labour is available in the Puhos area and labour costs are low. Various recruitment trainings and services can help companies find the right employees. Operators in the Puhos area can benefit from the research and development expertise of the University of Eastern Finland, Karelia University of Applied Sciences, Natural Resources Institute Finland and Lappeenranta University of Technology.



Companies operating in the area

- Surfactor Finland Oy - surface materials for the woodworking industry
- Hexion Oy - glues
- Caverion - Industrial maintenance services
- Seppo Eskelinen Oy - industrial maintenance services
- Puhoksen Veturipalvelu Oy - logistics services
- Joensuu Laivaus Oy - logistics services
- Puhoksen Satama Oy - logistics services

Companies operating in the Puhoshalli hall

- Narskuttely Oy - dental and xylitol products
- Nordic Koivu Oy - sap products
- Karelia Sankar Oy / Maito Karelia - food
- Nortim Oy - timber wholesale